



Giving Safe and Effective Discharge Instructions

High-quality discharge information reduces readmission rates and adverse events.

There are > 200 discharge sheets in multiple languages on bcemn.ca/pds
Email or text the discharge sheets to your patients from a no-reply number.

1 Before discharging the patient, consider:



Common
communication barriers



Clear, accurate, and
complete information



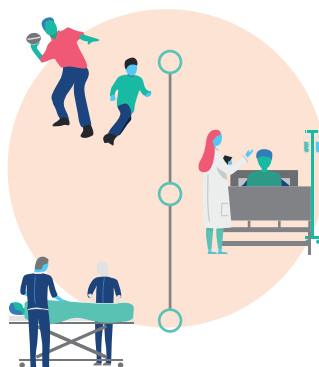
Patient's autonomy/
independence

2 Components of discharge instructions:

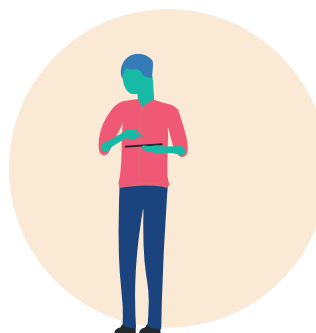
1. Diagnosis



2. Prognosis



3. Patient care plan



4. Return if...



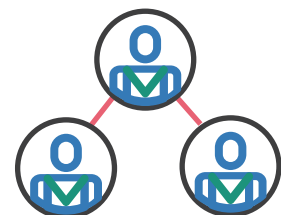
3 To improve the discharge process:



Give out written/digital
discharge instructions.



Take a moment for patient
health education and self-care.



Collaborate with health
care team for discharge.

